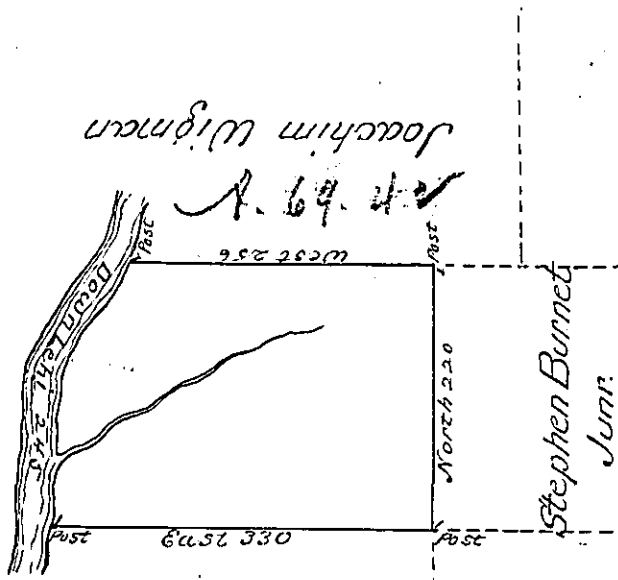


Bearing and distance
down Lehi River are
1. S. 62. W. 7
2. S. 35. W 118
3. South $\frac{120}{245}$



William Horsfield

Stephen Burnet

C. 90-109

C. 15. 177

C. 15. 28

By Virtue of a Warrant, dated the 3d April 1792 Sur-
veyed the 3rd August 1793 to John Steiner the above described tract
of land Situate on the East side of Lehi in the County of North-
ampton Containing four hundred and Seven acres one quarter
and the allowance of Six pcent &c.

p.
Geo. Palmer D. S.

To Daniel Brodhead Esqr. }
Surveyor General }

IN TESTIMONY that the above is a copy of the original remaining on file in
the Department of Internal Affairs of Pennsylvania, made
conformably to an Act of Assembly approved the 16th day of
February, 1833, I have hereunto set my Hand and caused
the Seal of said Department to be affixed at Harrisburg,
this second day of October 1900

James W. Latta
Secretary of Internal Affairs